

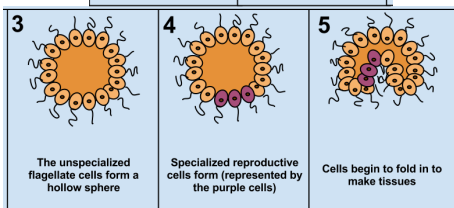
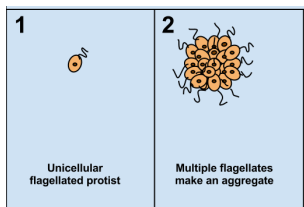
10 Paleontology

Paleontology is the study of life that existed roughly 11,700 years ago. It includes the study of fossils to **classify organisms** and study their interactions with each other and their environments. Such observations have been documented since the 5th century BC. Paleontologists use a variety of methods to study fossils, including **excavation**, preparation, analysis, and interpretation. The **field** of Paleontology draws on geology, biology, chemistry, and physics. They also use tools such as electron **microscopes** to study fossils. Paleontology is a fascinating and evolving field that provides insights into the history of life on Earth. Paleontology can also help us to understand the current state of the planet and to predict future changes.



fossils

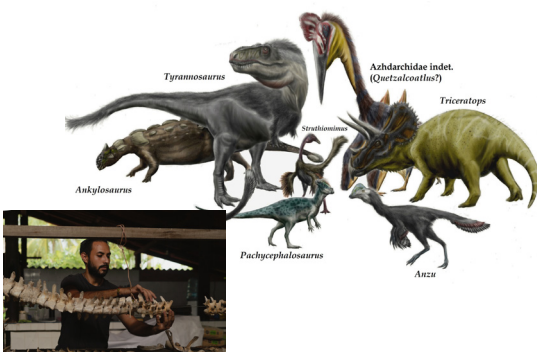
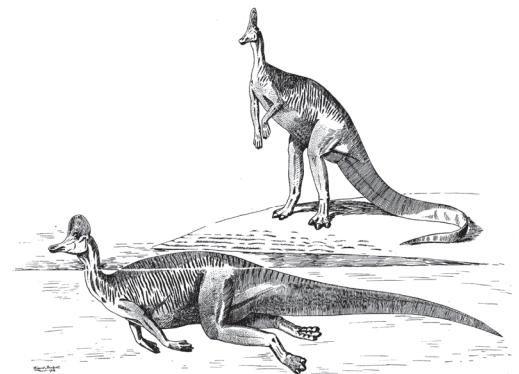
mammals



cell

multicellular

hadrosaur



T-rex

asteroid

